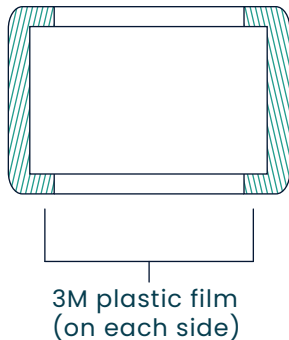
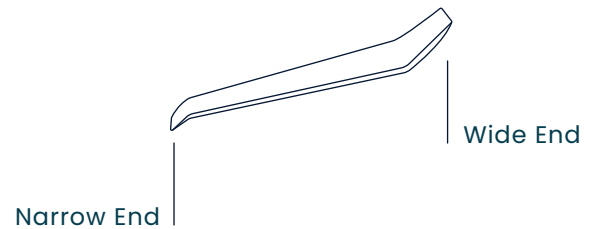


What's in the box?

New Cradle

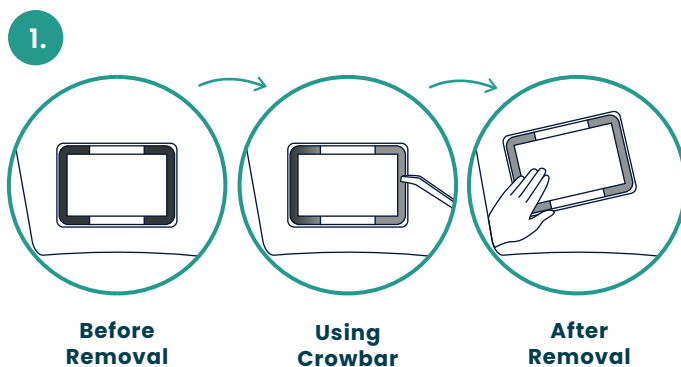


Plastic Crowbar

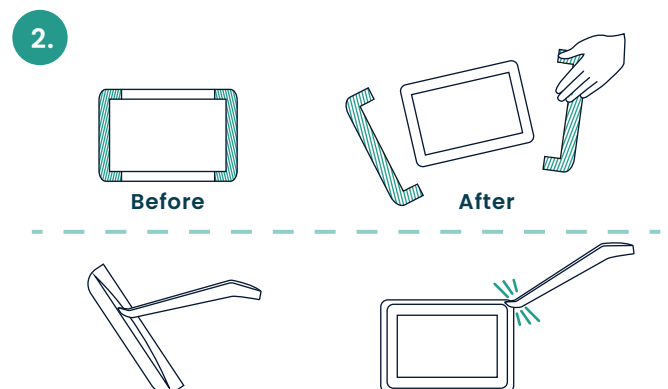


You will need to have your device to hand before refitting it using the new cradle.

Removing your Theo device and its old cradle from your windscreen



Remove the device from the windscreen using **the plastic crowbar provided**. Use the crowbar to edge the device off the windscreen.



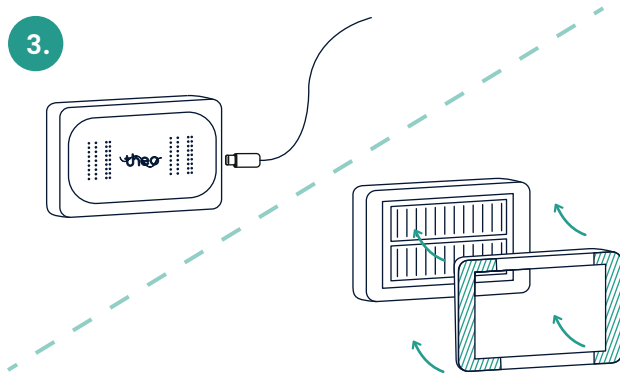
On the old cradle, snap off the two plastic feet with the adhesive on, as shown above.

Then, place the **narrow end** of the crowbar into the gap between the device and the cradle, using the crowbar to leverage the device out of the cradle. Repeat this process all the way round the device **until the cradle snaps** and it is removed from the device.

Turn over for further steps →

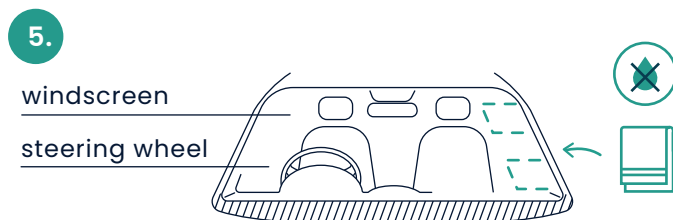
Reinstalling your Theo to your windscreen in its new cradle

Reminder: Don't forget to upload a new photo using the link we've sent you via email.



Take the device inside and **charge it overnight**. Charge your device using a USB-C cable, plugging it into the wall as you would with a mobile phone.

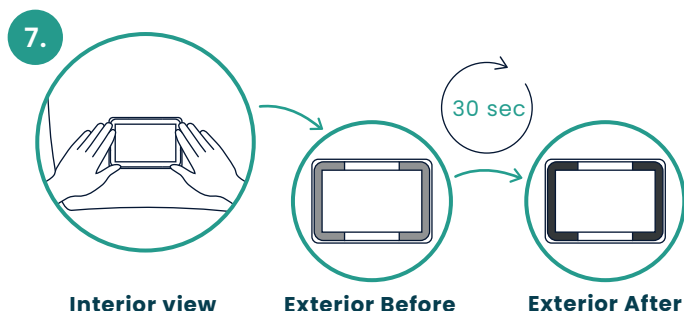
The next day, snap the device into the new cradle. This should click into place in all four corners.



Ensure the **inside** of your windscreen is **clean and dry** in the area where you are locating your Theo.

Use either a lint free cloth or kitchen towel to completely dry the area before installing your device.

Do not use any chemicals when cleaning the windscreen and make sure it is **completely dry**, using the windscreen heater if necessary.



Theo should be readable from the inside to ensure your device is correctly orientated. In the same area you cleaned, press the device firmly against your windscreen from inside your vehicle.

Apply firm pressure to the device for at least 30 seconds to ensure it is securely stuck on the inside of your windscreen.

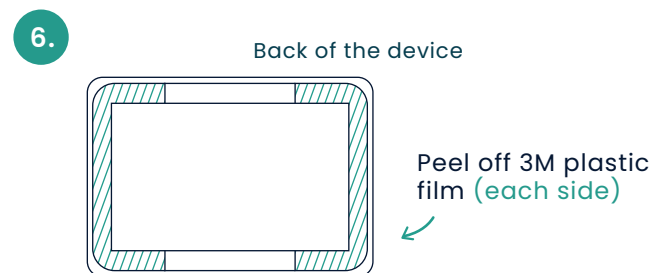
Ensure your device is placed on clear glass and can easily absorb sunlight.

Press firmly on the whole device until the adhesive, viewed from the outside, is the same colour all the way round and any air bubbles have disappeared.



When deciding where to locate your Theo, please pick the **bottom left hand side of your windscreen**. If this isn't possible, please locate your Theo in the top left hand side of your windscreen.

Ensure the solar panel can access direct sunlight. Do not install your Theo device too close to the dashboard or on tinted glass.



Gently peel off the 3M plastic film in each corner of the windscreen cradle.

Ensure you do not remove the foam attached to the back of the device.



Your Theo device is now ready to go!

It's now time to take a photo of your newly installed device. Remember to include the device and your vehicle registration number in the photo.

To upload it, use the link in the email we sent you when you received your new cradle.